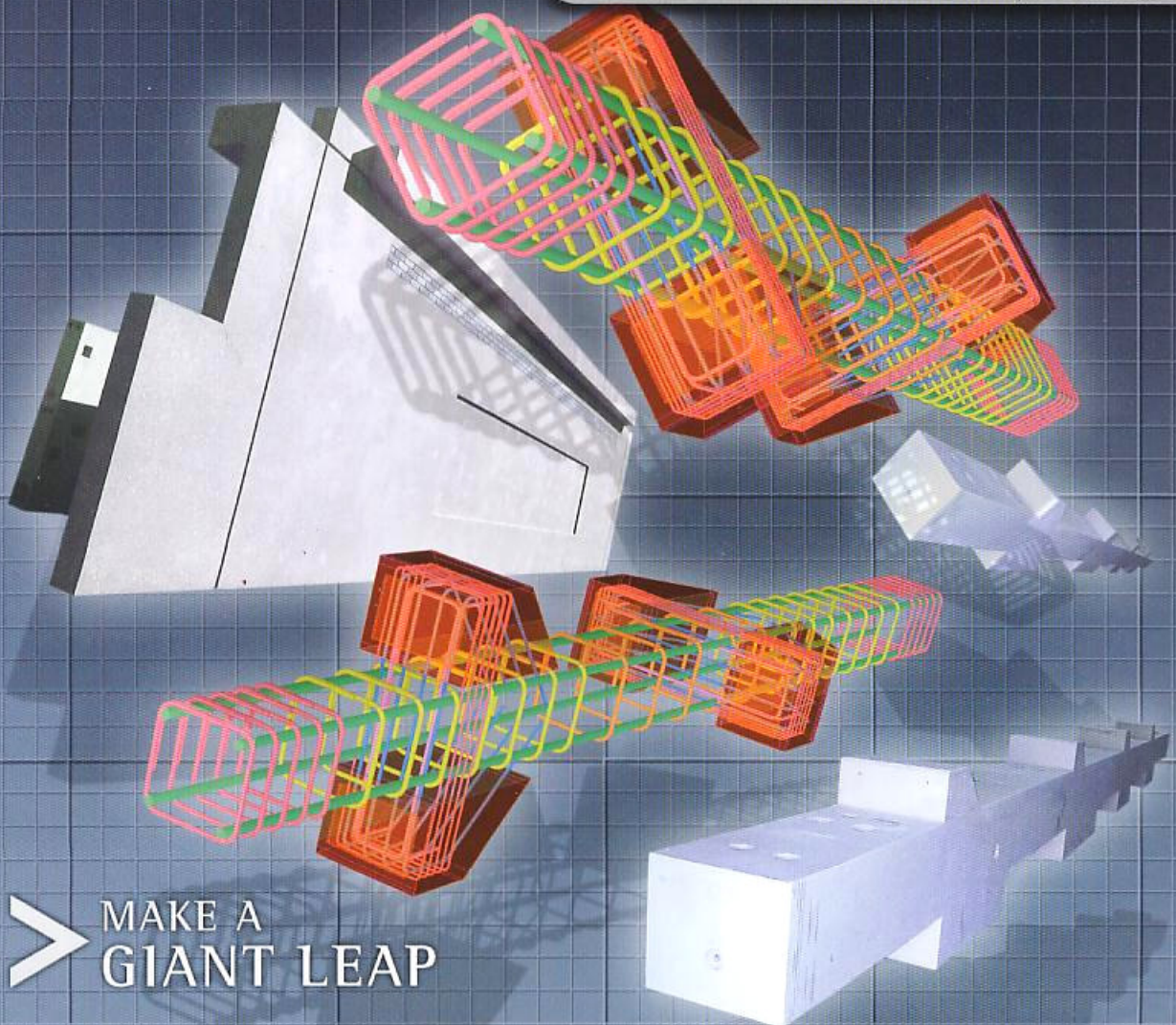




**TEKLA** Structures

FOR **PRECAST**  
CONCRETE DETAILING



**> MAKE A  
GIANT LEAP**



**TEKLA** Structures

# MAKE A GIANT LEAP IN PRECAST CONCRETE DESIGN AND DETAILING

> Tekla Structures is the first real parametric 3D structural Building Information Modelling (BIM) software solution for precast concrete designers and producers.

This unique modelling and detailing solution integrates the entire structural workflow from sales and conceptual design to detailing, manufacture and erection.

Make the leap from 2D drafting to 3D Building Information Modelling and enjoy increased efficiency and productivity, higher quality and greater profitability.

*FASTER*

*BETTER*

*MORE COMPETITIVE*



Capable of handling any size model - from small to very large

## OUTSTANDING PERFORMANCE

### FUNCTIONS AND FEATURES

#### Create dynamic sales models and pricing

- Fast, intelligent modelling lets you create several alternatives with accurate cost estimates
- Efficient optimisation of structural solutions
- Fascinating visualisation capabilities create powerful sales presentations

#### Preliminary design and engineering

- Consistent drawings, reports and other documents, because the model contains all of the structural information
- Fully object-based parametric modelling allows you to design in a true 3D environment
- Drawing objects are associated with model objects, which means less editing and more time saved
- Manage the model and the project as a whole – not as an aggregate of potentially non-matching individual pieces
- Unlimited options for viewing your design in real-time regardless of the size or complexity of your product

#### Faster and more accurate detailing

- Let the automated features take care of routine work like drawing production, leaving you free to focus on the essential design decisions
- Flexible libraries of connections, reinforcements and cast-in embedments allow you to instantly apply accurate details to any design
- Efficiently model and store your company's specific connections, details and drawing templates, and re-use them on all projects

#### Manage change with ease

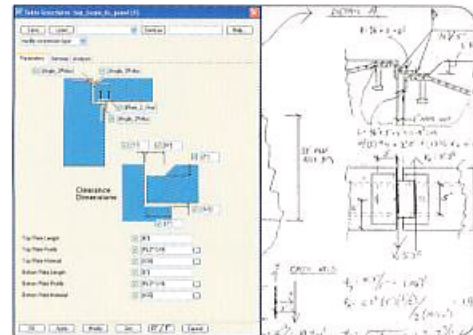
- Costly errors are minimized through superior change management
- All related components react to a change – drawings and documentation are updated automatically
- Automated clash checking efficiently exposes conflicts

#### Improve the flow of information from sales to erection

- Consistent utilisation of information – you input information only once
- Information is accumulative and accessible by everyone
- All changes are reflected in the output, eliminating the duplication of data, mistakes and human errors
- Multi-user capabilities enable fast, efficient throughput and fluent collaboration with other parties involved in the project

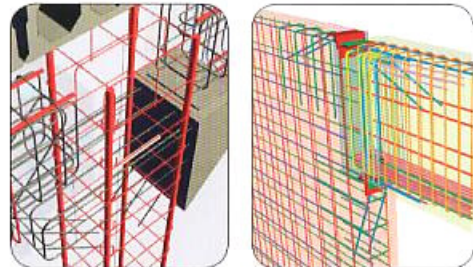
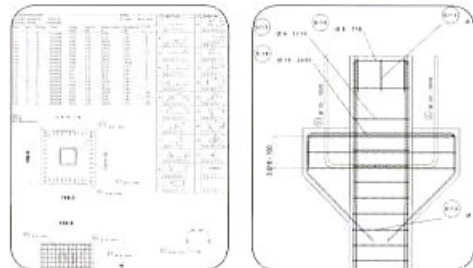
#### Integrate sales and erection with your design and detailing

- Get production management and casting data (NC) directly from the model
- Fully integrated drawing production ensures that everything fits together on the construction site
- Open and customisable solution to support production needs



#### Defining your own connections – Customisable solution

When the library components are not enough, create details simply by changing the dimensions of parametrically defined pieces and connections.



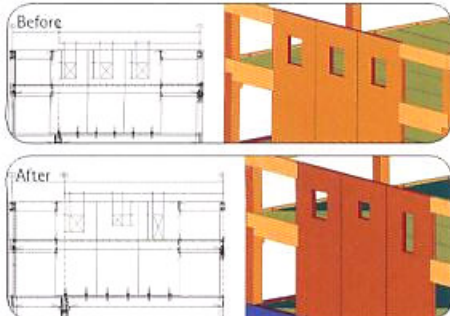
#### Adaptive reinforcements and connections

Automatically attach to parts and follow all changes made to the part whenever it is revised.

Item	Code	Length	Weight	Volume	Area	Perimeter	Surface
1	A300W	1000.0	1.00	1.00	1.00	1.00	1.00
2	A300W	1000.0	1.00	1.00	1.00	1.00	1.00
3	A300W	1000.0	1.00	1.00	1.00	1.00	1.00
4	A300W	1000.0	1.00	1.00	1.00	1.00	1.00
5	A300W	1000.0	1.00	1.00	1.00	1.00	1.00
6	A300W	1000.0	1.00	1.00	1.00	1.00	1.00
7	A300W	1000.0	1.00	1.00	1.00	1.00	1.00
8	A300W	1000.0	1.00	1.00	1.00	1.00	1.00
9	A300W	1000.0	1.00	1.00	1.00	1.00	1.00
10	A300W	1000.0	1.00	1.00	1.00	1.00	1.00

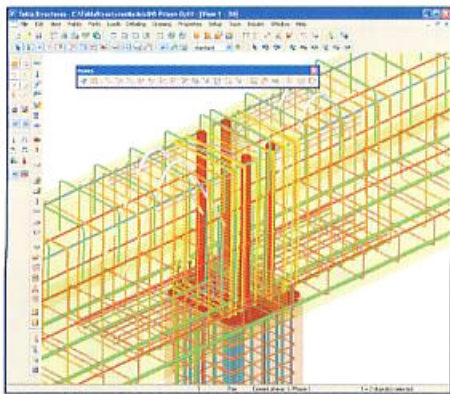
#### Automate your routine tasks, focus on design

Fully associative drawings and documents (e.g. bill of materials, BOM and bending schedules) are extracted from the model whenever needed.



#### Make late changes with ease

When changes occur, Tekla Structures' automatically keeps the model and drawings consistent.



#### Easier than 2D drafting

– you can start modelling quickly.

Get immediate results while generating sound return on your investment. Over time, your efficiency and productivity will exponentially augment the benefits of modelling in Tekla Structures.

## PLAY IT YOUR WAY WITH TEKLA STRUCTURES

### BENEFITS

#### Reduce your lead times from sales to erection

- Extremely powerful modelling guarantees greater speed and efficiency
- Automated routine tasks and documents, allowing you to focus on the essential design decisions

#### Enhance the efficiency of your workflow

- Integrate design and detailing with the rest of your operations
- Interoperability improves overall efficiency
- Easy coordination of precast concrete with other building systems

#### Improve the quality of your design work

- All structural design work is mastered within one model
- Accurate geometry
- Eliminate detailing errors – intelligent modelling ensures model consistency whenever changes are made

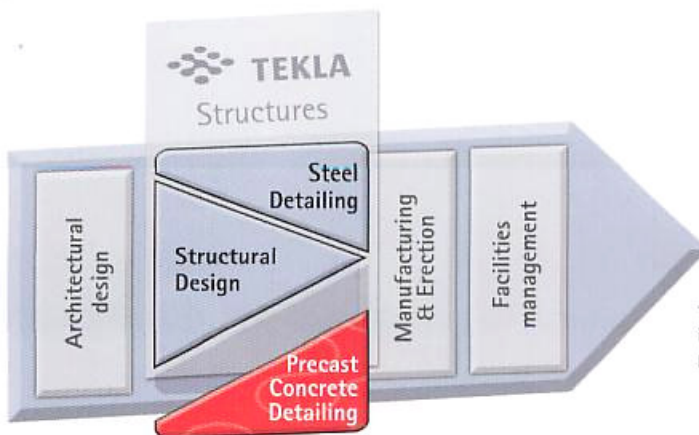
#### Win more competitive tenders

- Powerful visualisation, accurate cost estimates and BOM reduce risk when responding to tender offers
- Greater speed of modelling allows for alternative tender solutions

#### Maximise your productivity

- More efficient overall process improves project cycle time
- Reduced costs attributed to detailing errors
- Capitalise on your increased efficiency to cultivate new business opportunities

## TEKLA – THE WORLDWIDE LEADER IN STRUCTURAL BIM



Structural Building Information Modelling

Tekla Structures is the first 3D modelling software to fully integrate the structural Building Information Modelling (BIM) process from conceptual design to fabrication and erection.

WE COULDN'T HAVE SAID IT ANY BETTER...

## SHOCKEY

THE PARTNER OF CHOICE®  
The Shocke Precast Group

> "The much-anticipated Precast Concrete Software Consortium evaluation of the final Tekla Structures release is now underway. We believe the era of Building Information Modelling for the precast industry is very nearly at hand!

There is a growing awareness that the benefits of error reduction, productivity gain, and market responsiveness, through seamless data exchange and automation, will soon accrue to industry implementers of the Tekla Structures for precast 3D parametric modelling platform.

I am proud to have served with the hard-working Consortium members and our professional and responsive Tekla partners. The PCSC was formed in 2001 as the voice of the North American precast industry."



David W. Orndorff, P.E., Engineering Manager, Division  
Technical Committee Chair, PCSC  
The Shocke Precast Group, USA  
[www.shockecompanies.com](http://www.shockecompanies.com)

## TECHRETE

ARCHITECTURAL PRECAST CLADDING SPECIALISTS

> "We are leading the way in the jump from traditional 2D drawings to 3D modelling in the precast concrete industry. The adoption of Tekla Structures has allowed us to closely collaborate with the other project design team disciplines and eliminate any potential clashes and errors before we even think about site deliveries, saving us time and money. The software allows us to model each individual panel and produce all the required drawings, material reports and schedules. In the near future we intend to link the software to our factory bar bending and laser systems, allowing us even further financial and timesaving gains."

Chris O'Dea, Technical Director  
Techrete Ltd. UK & Ireland  
[www.techrete.com](http://www.techrete.com)



## FINNMAP CONSULTING Oy

> "Tekla Structures is revolutionizing the design and implementation methods for the precast concrete industry. At Finnmap, the high speed of modelling this affords has enhanced design work, in particular during the sketching and tendering phases. We have been able to model several alternative solutions for our customers, and provide visualizations and material quantity estimates. Without Tekla Structures and its 4D design feature, it would have been impossible to optimise the selection of the right structural solutions, installation methods and routes, and ensure the management of a building throughout its lifecycle."



Tage Eriksson, M.Sc.(Eng.), CEO  
Finnmap Consulting Oy, Finland  
[www.finnmapcons.fi](http://www.finnmapcons.fi)

## INGENIEURSBURO MEIJER & JOUSTRA BV

> "Since 2003, Tekla Structures has improved our way of working in precast concrete design. We have been constantly amazed by all of the new functionality and reliable customer support that Tekla provides. Tekla Structures built-in intelligence automatically modifies all input, therefore eliminating mistakes. Our clients are also astonished by the performance of initial drawing production and the well-defined visual presentations."

Homme Joustra, Director and Joint owner  
Engineering office Meijer & Joustra bv,  
The Netherlands

## PROVEN PARTNER

### Tekla - Proven Results

> Tekla Corporation has been providing the world with innovative solutions for almost 40 years. The company's products can be found in over 70 countries, with thousands of users worldwide. Tekla is the leading provider of structural BIM solutions.

Tekla Structures has evolved from the industry-renowned Tekla Xsteel. Our current solution is already the second generation of 3D precast modelling software developed by Tekla.

Take on the future of precast concrete design with a proven partner!



## > ASSURE YOUR SUCCESS

### Quality Technical support

> At Tekla, the customer comes first. Our team of skilled professionals provides all the technical support you need.

### Cutting-edge Technology

> Tekla continuously invests in R&D to provide you with leading software for real structural BIM. We ensure that the latest and most advanced market solutions are available for you.

### Want To Know More?

> Order a free Tekla Structures Demo CD now!  
Visit [www.tekla.com/democd](http://www.tekla.com/democd) or call your local Tekla office.

### Contact Information:

#### Your local Tekla office:

Tekla (M) Sdn Bhd  
L5-E-1A, Enterprise 4  
Technology Park Malaysia  
Bukit Jalil  
57000 Kuala Lumpur  
Malaysia  
Tel: +603 8996 1191  
Fax: +603 89961192

#### Tekla Corporation Headquarters:

Metsänpöjängkuja 1, P.O. Box 1  
FIN-02131 Espoo  
FINLAND  
Tel: +358 30 661 10  
Fax: +358 30 661 1500

"YOUR LOCAL TEKLA OFFICE OR  
PARTNER IS HAPPY TO SERVE!"



TEKLA OFFICES WORLDWIDE: CHINA (SHANGHAI), FINLAND (ESPOO), FRANCE (PARIS, ALBI), GERMANY (FRANKFURT), JAPAN (OSAKA), MALAYSIA (KUALA LUMPUR), NORWAY (SANDVIKA), SWEDEN (VÄSTERÅS), U.K. (LEEDS), UNITED ARAB EMIRATES (DUBAI), U.S.A. (ATLANTA)

At your service:



HSD COMPUTERS PTE. LTD. CO.

2<sup>nd</sup> FLOOR, 38B BUILDING, #79 KAMUNING ROAD  
QUEZON CITY, PHILIPPINES 1103

TEL [+632] 926 2216 FAX (+632) 928 6488

E-mail: [sales@hsdphil.com](mailto:sales@hsdphil.com) Website: [www.hsdphil.com](http://www.hsdphil.com)