

AutoNEST V9

Compatible with AutoCAD R14 or higher

NestPRO

AutoNEST V9 incorporates one single powerful nesting engine – **NestPRO** that maximizes stock usage and minimizes wastage. It is a low-cost and efficient tool for materials requirements planning and cutting plans production.

The software can run as an independent Windows application or as an integrated AutoCAD solution to handle a variety of nesting applications for Laser, Flame, Routing, Punching, Wire cutting etc.

Features at a glance ...

1. Irregular /remnant stock sheet nesting

- irregular stocks with /without mark-outs

2. Multiple levels of Parts-In-Part

- parts-within-part(s) (PIP)

3. Parts can be in DWG /DXF formats

- true shape nesting.

4. Max. no. of distinct Parts = 1000

- max. quantity for each Part = 9999

5. Basic & filler quantity for Parts

- maximizing stock coverage

6. Nesting – able to do “Extended” nesting

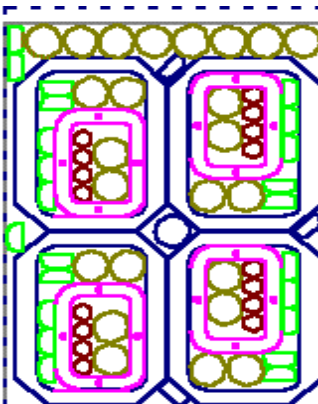
- extending the nesting search algorithms

7. Nesting reports – area /perimeter /qty of Parts

- support both Metric and Imperial units

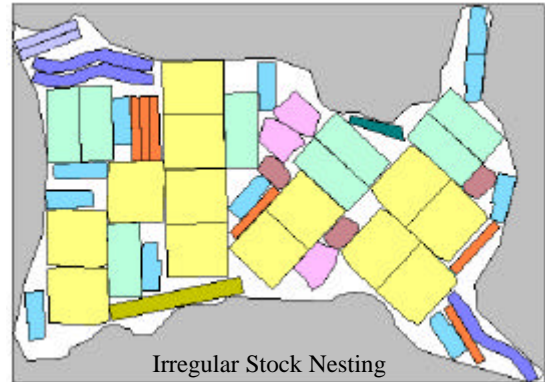
8. Nesting results – parts in original layer /color

- with details / user-definable layer /color.



Multi-level Nesting

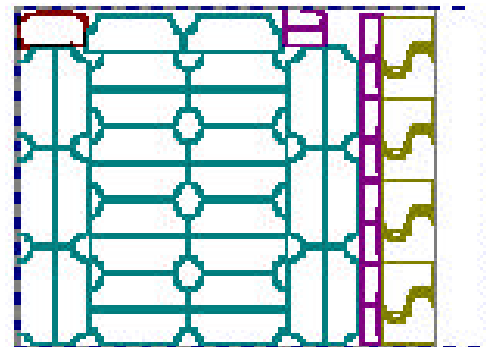
AutoNEST is able to nest one or more smaller parts within the cut-out of a bigger part.



Irregular Stock Nesting

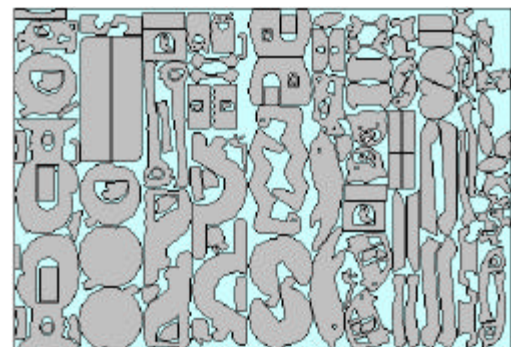
Common Line

AutoNEST will attempt to align "long" edges of parts against each other where appropriate, so as to optimize cutting tool path.



Size/ Geometry Mix

AutoNEST allows a variety of shapes, sizes and geometry to be nested simultaneously onto the same stock sheet.



RADAN SYSTEMS PTE LTD - Specialist Systems for computer aided design, draughting and manufacture.

Tel :+ 65- 6862-4823

Fax :+ 65- 6862-1310

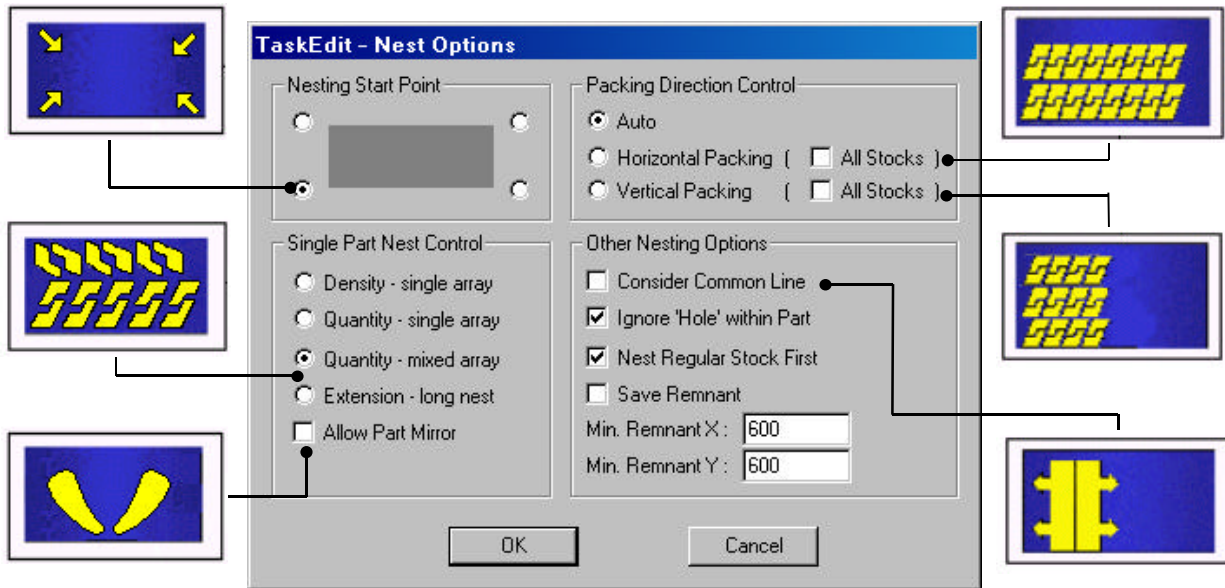
Email: sales@radansys.com.sg

www.radansys.com.sg

AutoNEST V9 NestPRO

Incorporating NestPRO nesting engine

Nesting Control *AutoNEST* provides a variety of controls to match different cutting machines and working conditions. These nesting controls include Nest Start Point, Packing Direction, Single Part Nest Control and other nesting options.



Frequently Asked Questions

Q. What are the minimum system requirements?

- A.**
- Pentium-based computer
 - 128 MB RAM
 - CD-Rom drive
 - Parallel or USB port for hardware lock
 - MS Windows 98 or higher
 - AutoCAD R14 or higher (optional)

Q. Does it require special training?

- A.** No! *AutoNEST* has a simple, intuitive graphical user interface (GUI) that guides the new user. An on-line documentation is also available.

Q. Can *AutoNEST* run in a standalone environment?

- A.** Yes! The NEST MANAGER module runs independently on the Windows environment.

Q. How can the nested layouts be viewed?

- A.** The nested layouts can be viewed within AutoCAD or any CAD system that reads DXF files.

Q. Can the nested layouts be linked to other commercial NC software?

- A.** Yes *AutoNEST*'s open architecture will facilitate easy integration with third-party NC software.



10 Toh Guan Road, #03-07 TT International TradePark, Singapore 608838
Tel : +65- 6862-4823 Fax : +65- 6862-1310 Email : sales@radansys.com.sg
Website : www.radansys.com.sg